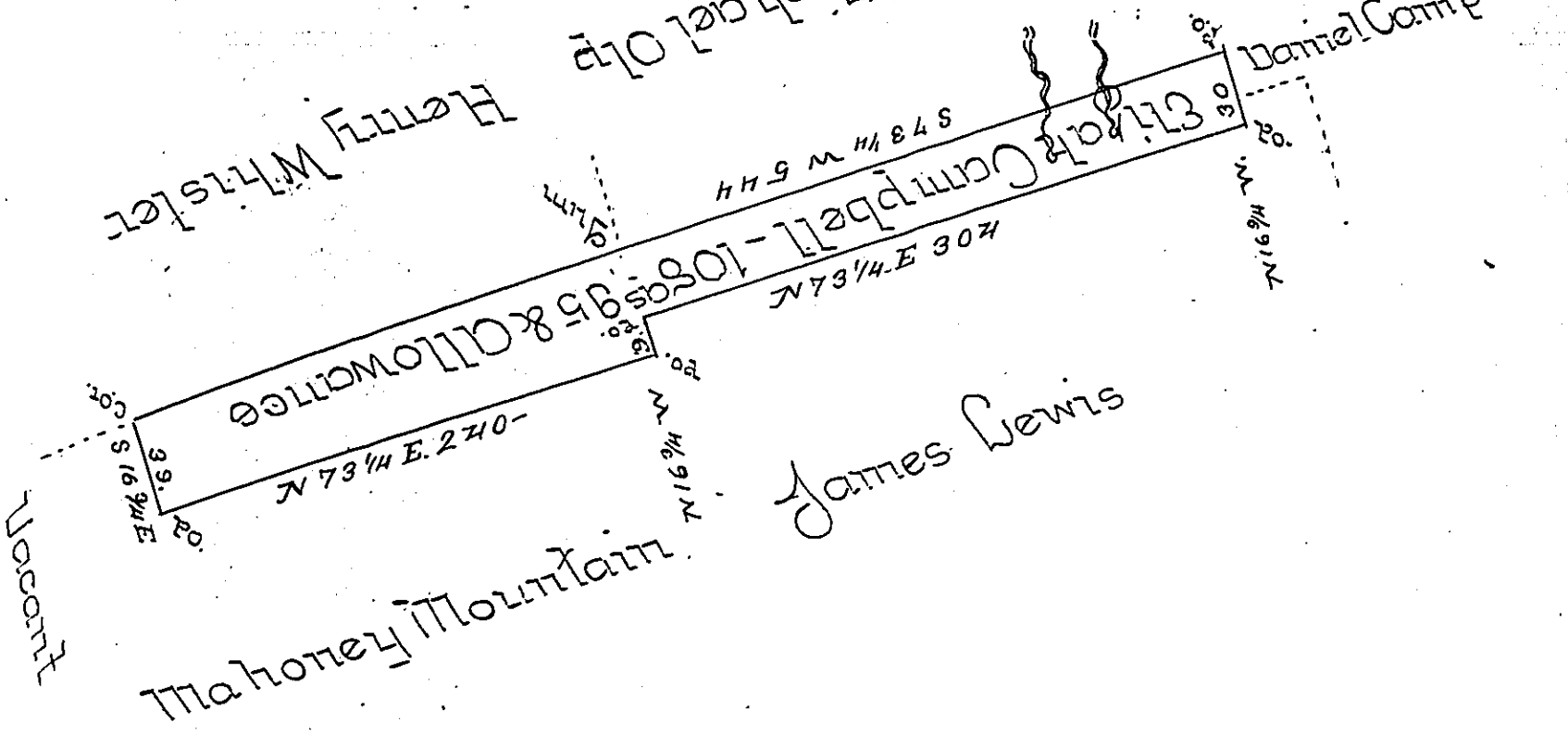


Joseph Chamberlain & Michael O'Leary

Henry Whistler



Situate in Shamokin Township Northumberland County on  
 the Waters of Little Shamokin Creek containing one Hun-  
 dred and Eight Acres and Ninety five perches and Allowan-  
 ce of Six per Cent. for Roads &c. Surveyed on the 20<sup>th</sup> day  
 of October 1814 unto Elijah Campbell by Virtue of his War-  
 rant bearing date the 27<sup>th</sup> day of September Anno Domini  
 1814 s

To Richard M. Beech Esquire }  
 Surveyor General s } J. Rockefeller U.S.

IN TESTIMONY that the above is a copy of the original remaining on file in  
 the Department of Internal Affairs of Pennsylvania, made  
 conformably to an Act of Assembly approved the 16th day of  
 February, 1833, I have hereunto set my Hand and caused  
 the Seal of said Department to be affixed at Harrisburg,  
 this Third day of January 1899.

*James W. Latta*  
 Secretary of Internal Affairs.